



# ACCESSORIES

FLANGES, BRACKETS, MEASURING WHEELS &  
FLEXIBLE COUPLINGS

## CONNECTORS

<b>CON-015</b>	<b>Material</b>	Plastic
	<b>Pins</b>	3+GND
	<b>Length</b>	1.3"
	<b>Protection</b>	IP 65



<b>CON-003 (12 Pin)</b> <b>CON-005 (16 Pin)</b>	<b>Material</b>	Brass
	<b>Pins</b>	12 or 16
	<b>Length</b>	2.4"
	<b>Protection</b>	IP 65



<b>CON-012</b>	<b>Material</b>	Brass
	<b>Pins</b>	5
	<b>Length</b>	2.5"
	<b>Protection</b>	IP 40



<b>CON-000</b>	<b>Material</b>	Plastic/Metal
	<b>Pins</b>	9
	<b>Length</b>	2.0"
	<b>Protection</b>	IP 40

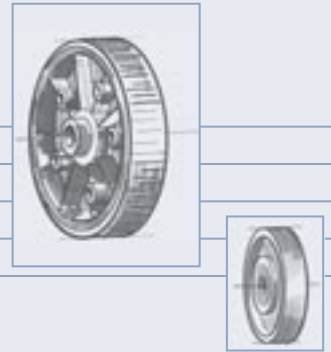


<b>CON-007 (6 Pin)</b> <b>CON-009 (7 Pin)</b>	<b>Material</b>	Aluminium
	<b>Pins</b>	6 or 7
	<b>Length</b>	1.3"



MEASURING WHEELS

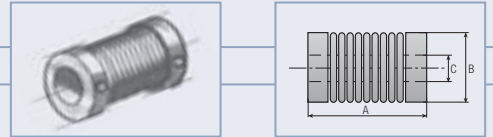
Type	Circumference	Material	D	B
VGM 201	200 mm	Smooth Plastic	6 mm	12 mm
VGM 202	200 mm	Ribbed Plastic	6 mm	12 mm
VGM 203	200 mm	Aluminium	6 mm	15 mm
VGM 501	500 mm	Aluminium	12 mm	25 mm
VGM 503	500 mm	Smooth Plastic	12 mm	25 mm
VGM 504	500 mm	Ribbed Plastic	12 mm	25 mm



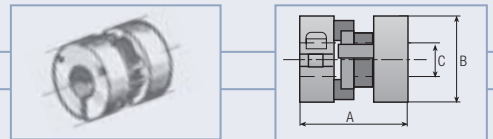
D: Ø Shaft/Bore  
B: Surface Width

FLEXIBLE COUPLINGS

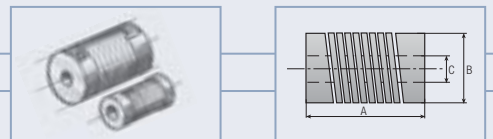
Bellows Coupling	Type	VGK 3520
	A	35
	B	20
	C	6-14



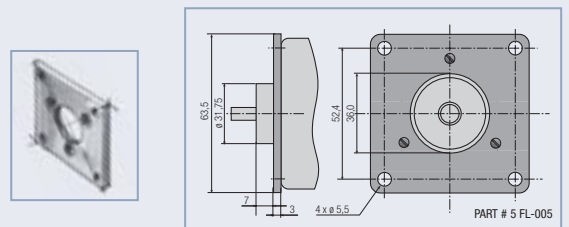
Precision Coupling	Type	VGK 2525
	A	25
	B	25
	C	12



Spring Coupling	Type	VGK 5028	VGK 3516
	A	50	35
	B	28	16
	C	6-24	6-12



SQUARE FLANGES (IS 581)

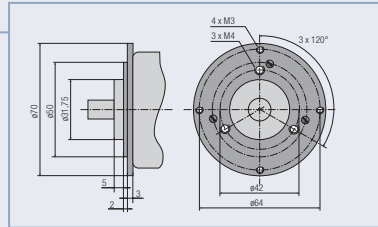




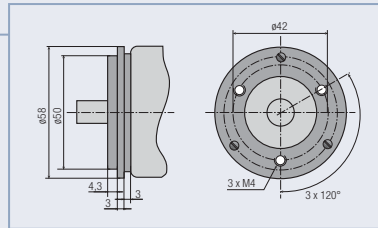
**ROUND FLANGES (IS 581)**



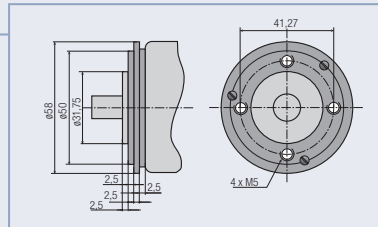
**FLA-002**



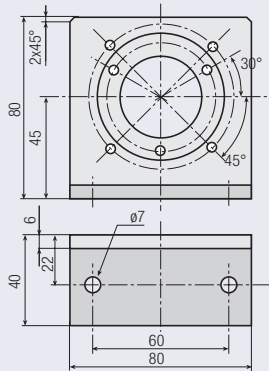
**FLA-003**



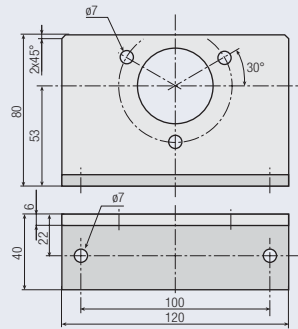
**FLA-004**



**MOUNTING BRACKETS**



MBR-001 for Series  
IS 580/581 & AS 580



MBR-002 for Series  
IS 900 & AS 900

other flanges and accessoires available on request